

QPager Demo Process

Notice: This application is intended for demo purposes only and shipped with the QPager. If you don't own a license of the QPager you can download a demo-copy from our website:
www.quadcore.nl

This application simulates a virtual process. This process does not necessarily behave as you expect in real life. The purpose of this virtual process is to provide the QPager with data for evaluation purpose.

The program consists of 4 tabs with each a screen. The tabs are:

- Process
- Tags
- Logic
- Help (This text)

The process tab:

In this screen you can see a process with 4 tanks (A-D). With the corresponding pumps (A-C), tank D will be filled with the contents of tank A, tank B and tank C. If tank D is filled up to a certain level, the stir motor on tank D will stir the contents of tank D for a certain time. After the stir, pump D will pump tank D empty. If tank D is empty the process will start again.

You can manipulate the process by opening and closing the valves. A valve can be opened or closed by clicking on it. If a valve is closed and a connected pump is started the pump will increase in temperature (bar below each pump) until an error occurs. You can reset this error by clicking on the pump.

The Tags tab:

In this screen you can see all the states and process values of each item. QPager can access the tags in this screen by DDE. The tag-names can be filled in at the DDE screen in QPager at the item field. Then they can be evaluated by QPager and send a message at a certain state. A message is then being sent to a printer, fax or mobile telephone (SMS message).

The exact item names that can be used are:

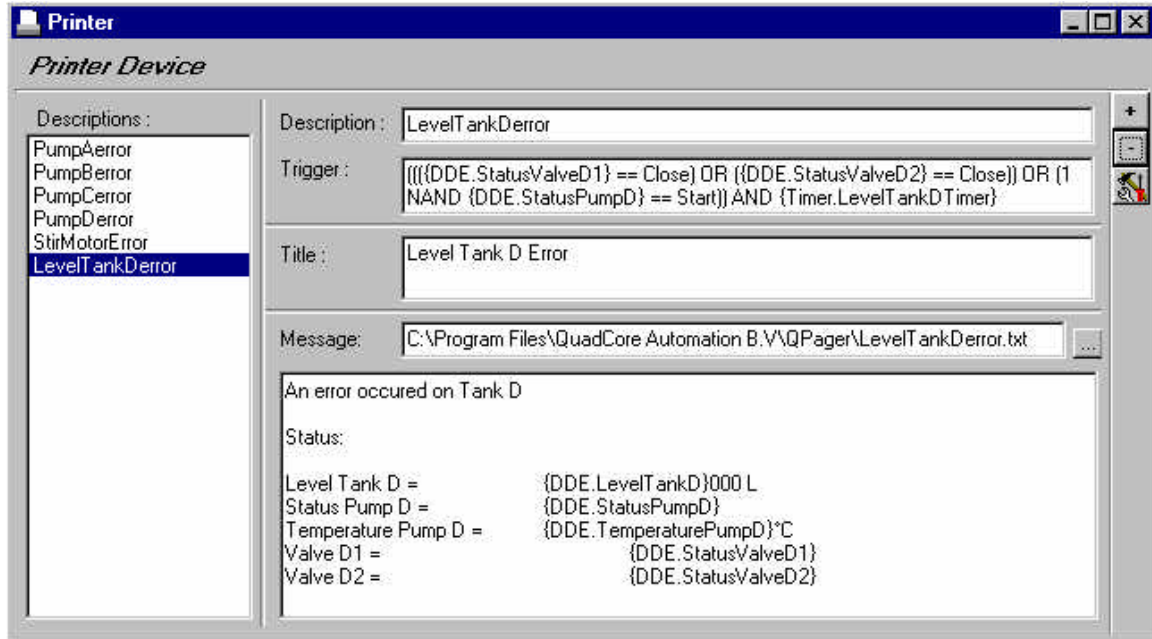
- LevelTankD
- StatusPumpA
- StatusPumpB
- StatusPumpC
- StatusPumpD
- TemperaturePumpA
- TemperaturePumpB
- TemperaturePumpC
- TemperaturePumpD
- StatusStirMotor
- StatusValveA1
- StatusValveA2
- StatusValveA3
- StatusValveB1
- StatusValveB2
- StatusValveB3
- StatusValveC1
- StatusValveC2
- StatusValveC3
- StatusValveD1
- StatusValveD2

The Logic tab:

In this screen you can see the step program of the process. If you click on a step, the process will continue from that step.

Example on how to create a message on the printer:

Below you see an example which is delivered with the QPager Demo.



In the trigger field you can see the formula which triggers the message.

Important in this field: Everything in this field is **Case sensitive**
Every evaluation must stand between brackets
Only ports with 2 inputs can be used

The above trigger in port logic:

